



*Changing the future
of financial advice.*

LEVEL FOUR FINANCIAL

Training: MFA Configuration

February 2023

- INTERNAL USE ONLY -

Why MFA

- Secure against stolen passwords
- Mitigate being “spoofed” by imposters
- Align with evolving compliance standards
- Offset weak passwords

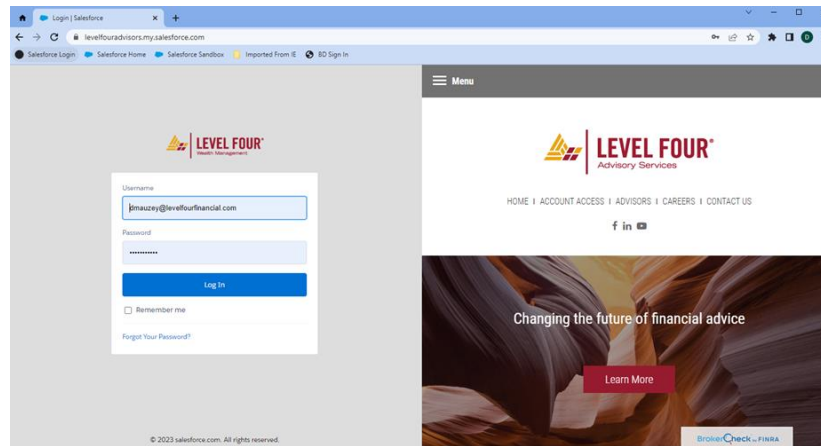
“Microsoft engineers said that 99.9% of the account compromise incidents they deal with could have been blocked by a multi-factor authentication (MFA) solution.”

Multi-factor Authentication (MFA)

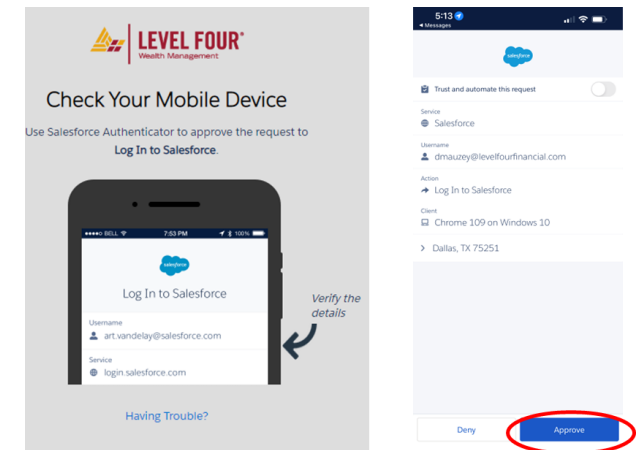


Login Process – 2 Steps

1 Login into Salesforce

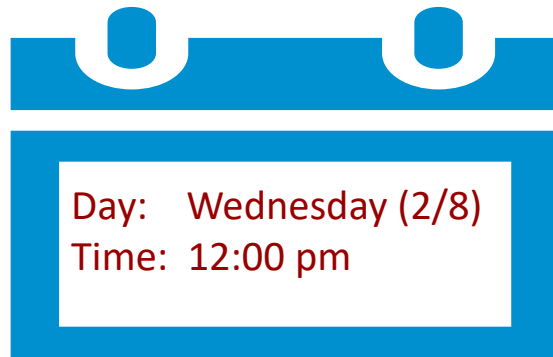


2 Login into Salesforce



Configuration: Key Information

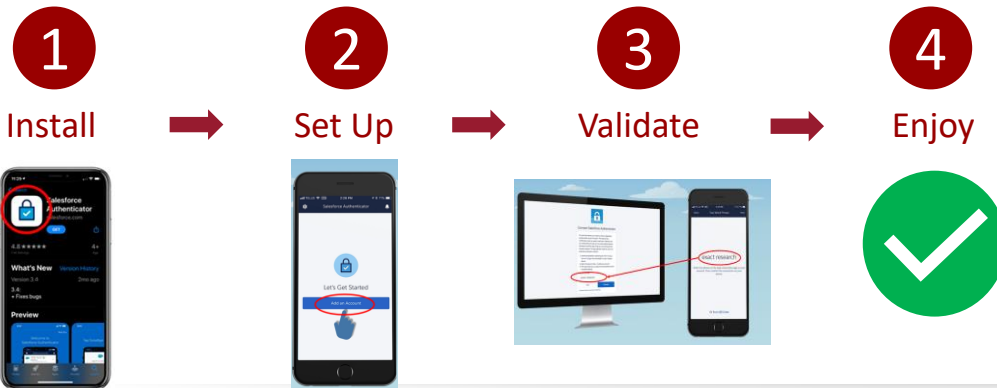
When?



What?

- Starting February 1, Salesforce Requires All users across the platform to go to MFA. Deadline for L4 is February 11th.
- All Salesforce users will be required to validate their identify from a secondary device (ie your mobile phone)
- To validate, you will be asked to “Approve” a new login.

Configuration Overview



Support

- Support: Training, Companion Guide & Happy Hours (Help Desk).
- Training: Daily until Wednesday’s launch
- Help Desk: Daily Zoom Windows for Personalized support to complete installation



Thank you

- INTERNAL USE ONLY -